

Non-proliferative sickle cell retinopathy

Category(ies): Retina, Vitreous

Contributor: Prashant K. Parekh, MD, MBA

Photographer: Carol Chan, CRA

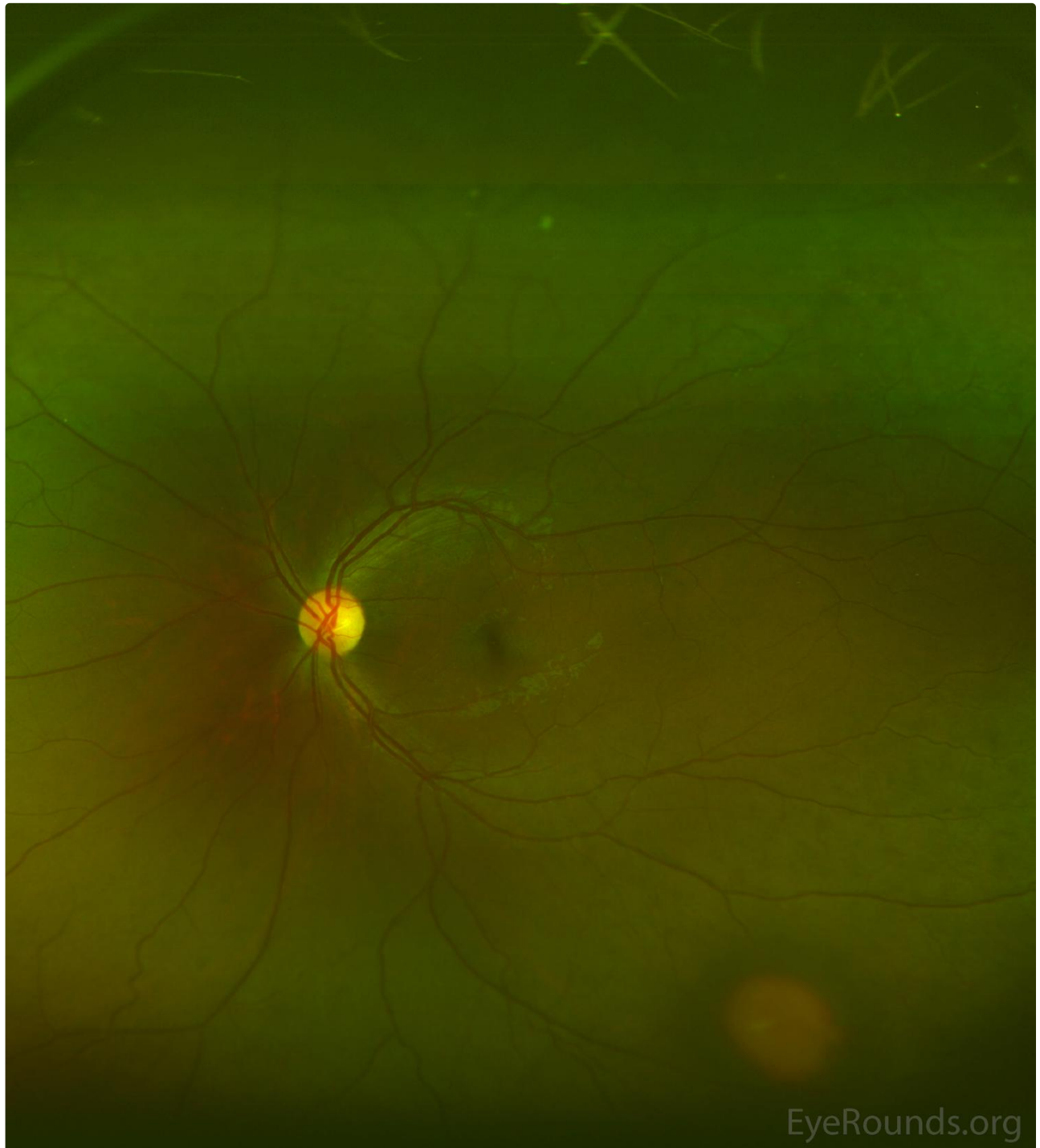


Photo demonstrates an elevated, round hypopigmented (salmon colored) lesion in the inferior retinal periphery with surrounding hyperpigmentation. This lesion represents a previous intraretinal hemorrhage, which has since hemolyzed and now appears as a "salmon patch."

[Enlarge](#)

[Download](#)

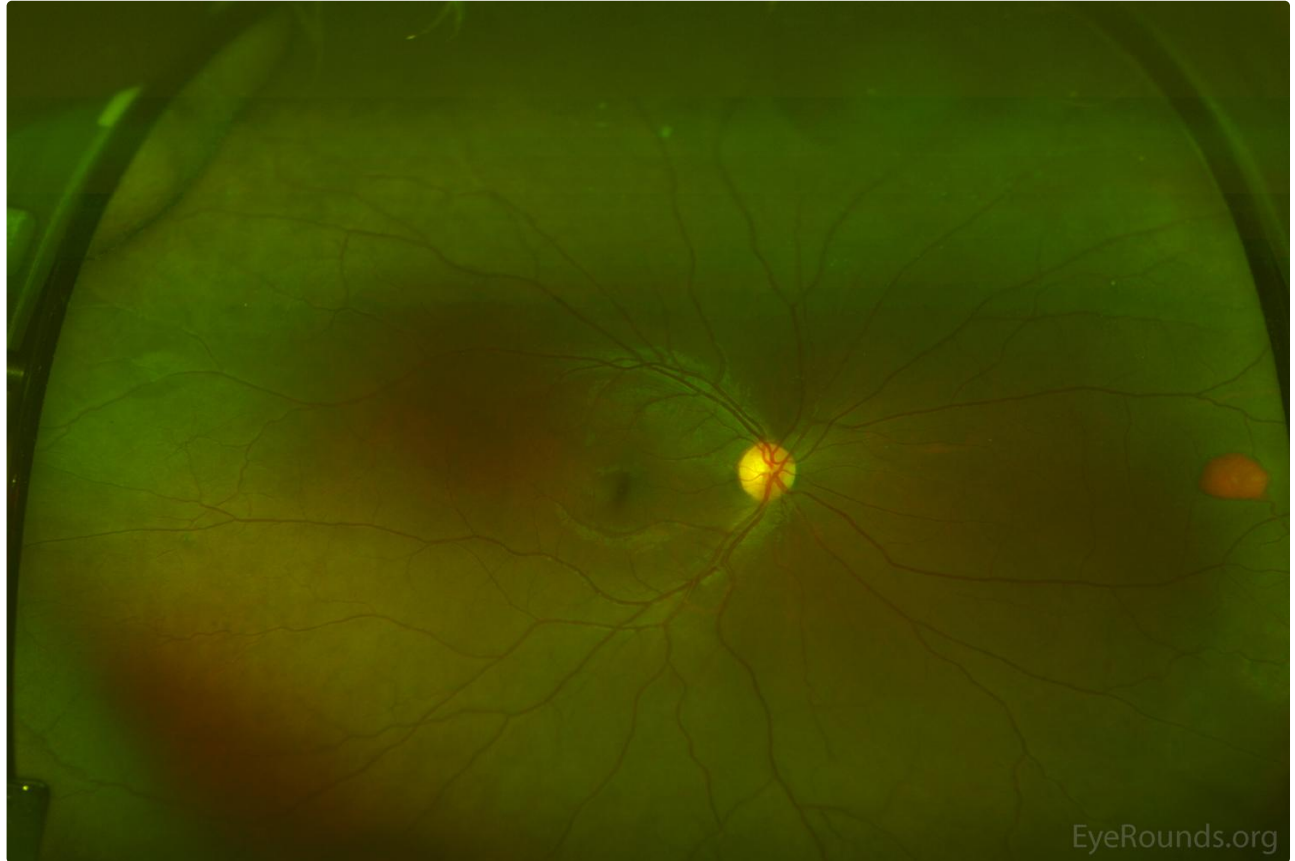


Photo demonstrates a flat, salmon colored, ovoid lesion in the nasal retinal periphery that also represents a "salmon patch."

[Enlarge](#)

[Download](#)

Image Permissions:

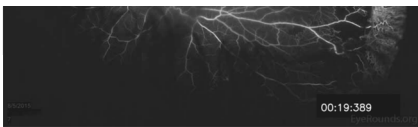


Ophthalmic Atlas Images by EyeRounds.org, The University of Iowa are licensed under a [Creative Commons Attribution-NonCommercial-NoDerivs 3.0 Unported License](http://creativecommons.org/licenses/by-nc-nd/3.0/).



Related Articles





[Related Case: Sickle Cell Retinopathy](#)

Address

University of Iowa
Roy J. and Lucille A. Carver College
of Medicine
Department of Ophthalmology and
Visual Sciences
200 Hawkins Drive
Iowa City, IA 52242

[Support Us](#)

Legal

Copyright © 2019 The University of
Iowa. All Rights Reserved
[Report an issue with this page](#)
[Web Privacy Policy](#) |
[Nondiscrimination Statement](#)

Related Links

[Cataract Surgery for Greenhorns](#)
[EyeTransillumination](#)
[Gonioscopy.org](#)
[Iowa Glaucoma Curriculum](#)
[Iowa Wet Lab](#)
[Patient Information](#)
[Stone Rounds](#)
[The Best Hits Bookshelf](#)

EyeRounds Social Media

Follow



Receive notification of new cases,
[sign up here](#)
[Contact Us](#)
[Submit a Suggestion](#)